

COVID-19 Policy for Field Trips

2021-2022



Masks required.

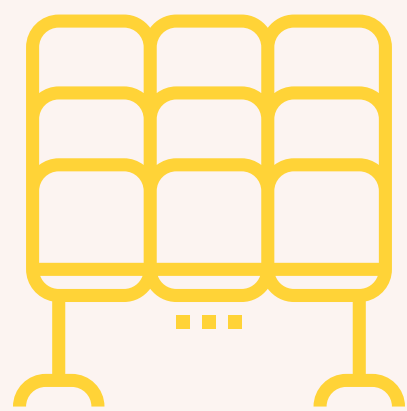
Masks are required at all times while in the building.

Masks for children and adults are available as needed.



All employees vaccinated.

All employees your group will be in contact with at Imagination Stage are vaccinated.



Seating in pods.

Your group will be seated by section (so no other group will be seated in your section). There will not be a distancing policy within your group enforced by Imagination Stage.



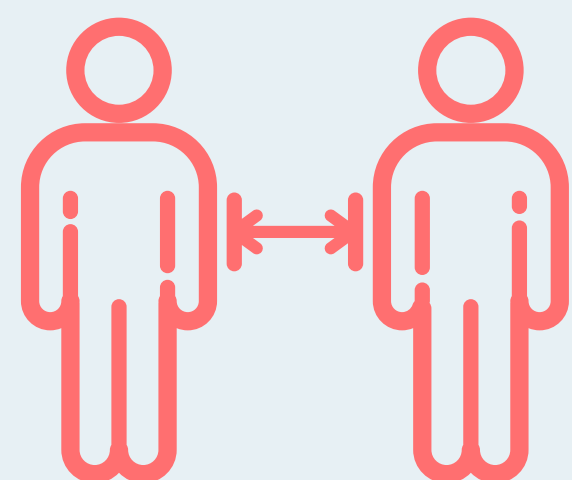
Sanitizer always available.

We have contactless hand sanitizer stations available at our entrances and throughout the building.

All are welcome to wash their hands in our facilities as well.

Contact Tracing.

We have mandatory sign in for all who enter our building (for groups, we will have a representative sign in) with a screening questionnaire.



Practice social distancing.

Social distancing will be maintained between schools at all times while at Imagination Stage.

Continuous Updates.

We are closely following the CDC Guidelines and updating our COVID-19 policies as recommended by the CDC.

